

# BC-2800Vet

## Auto Hematology Analyzer

### Technical Specifications:

#### Parameters

WBC, RBC, HGB, HCT, MCV, MCH, MCHC, RDW, PLT, MPV, PDW, PCT  
 Additional for Dog, Cat, Horse, Rat, Mouse, Rabbit, Cow and Monkey  
 Lymph#, Mon#, Gran#, Lymph%, Mon%, Gran%  
 Eos% (Special for Dog and Cat)  
 Histograms for WBC, RBC and PLT

#### Principles

Electrical impedance method for cell counting and cyanide free method for Hemoglobin

#### Performance

Parameter	Linearity Range	Precision ( CV % )
WBC ( $10^9$ / L )	0.4-99.9	3.0 ( 7.5-15.0 )
RBC ( $10^{12}$ / L )	0.20 – 16.99	2.0 ( 3.50 -6.00 )
HGB ( g / L )	3-250	2.0 ( 120 -180 )
MCV(fl)		2.0 ( 40.0-110.0 )
PLT ( $10^9$ / L )	10-2999	6.0 ( 200-500 )

#### Carryover

WBC, RBC, HGB  $\leq$  0.5%, PLT  $\leq$  1.0%

#### Sample Volume

Prediluted: 20  $\mu$ L  
 Whole Blood: 13  $\mu$ L

#### Throughput

25 samples per hour

#### Display

Color LCD display Resolution: 800 x 600

#### Input/Output

RS232 x 2, 1 parallel printer (optional), 1 barcode scanner (optional),  
 1 keyboard interface

#### Printout

Thermal recorder, 50mm width paper, multiple printout formats,  
 external printer (optional)

#### Operating Environment

Temperature: 15 °C~30°C  
 Humidity: 30%~85%

#### Power Requirement

AC 100-240V, 50/60Hz

#### Dimensions

322 mm (W) x 437 mm (H) x 386 mm (D)

#### Weight

Less than 23 Kg



# BC-2800Vet

## Auto Hematology Analyzer



Mindray Building, Keji 12th Road South,  
 High-tech Industrial Park, Nanshan, Shenzhen 518057, P.R. China  
 Tel: +86 755 8188 8998 Fax: +86 755 26582680  
 E-mail: intl-market@mindray.com www.mindray.com  
**Mindray is listed on the NYSE under the symbol "MR"**

**mindray** is a trademark of Shenzhen Mindray Bio-Medical Electronics Co., Ltd.  
 ©2013 Shenzhen Mindray Bio-Medical Electronics Co., Ltd. All rights reserved. Specifications subject to changes without prior notice.  
 P/N:ENG-BC2800Vet-210285x4-20130303



**mindray**  
 healthcare within reach

# BC-2800Vet

## Auto Hematology Analyzer



- CBC+DIFF for Dog, Cat, Horse, Rat, Mouse, Rabbit, Cow and Monkey;

Additional Eos% measurement for dog and cat.

- 13 pre-defined animal species + 3 programmable animals on request
- Fully automated, compact, flexible and low cost
- Throughput: 25 samples per hour
- Micro sampling of 13uL whole blood
- Automatic sample probe cleaning
- Huge data storage of 10, 000 results with histograms

### Multiple Animal Species

- 13 pre-defined programs (Dog, Cat, Horse, Rat, Mouse, Rabbit, Monkey, Cow, Pig, Buffalo, Sheep, Camel, and Goat) + 3 programmable animals on request

### Convenient and Safe To Use

- Fully automatic
- Integrated self-cleaning system minimizes maintenance
- User friendly interface makes for ease of use
- Original cyanide free reagents ensure safe , Biohazard free operation

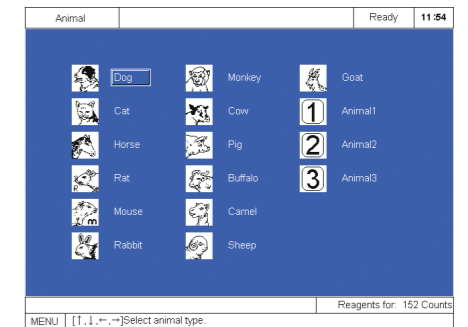
### Superior Configuration

- Compact size requires small bench space
- Large color LCD display features intuitive communication
- Built-in thermal printer allows auto printing after every test

### High Reliability and Accuracy

- Independent counting system for each species to ensure high accuracy
- Fully integrated calibration and quality control programs

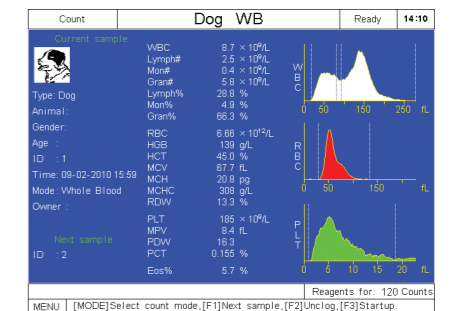
### Operation Procedures



Step 1 Our Integrated list makes species selection easy



Step 2 Fully automatic aspiration and dilution procedures



Step 3 Results in less than three minutes; All parameters and histograms are visualized and printed



Step 4 Programmable multi-format printout